



**£1,800,000**

LAND FOR SALE: OUTLINE PLANNING FOR FOURTEEN LARGE EXECUTIVE DETACHED HOMES.  
2@ 1750SQFT, 2@ 2,200SQ FT, 10@ APPROX 2,500SQ FT.

Location: Situated between Hove Edge & the delightful village of Lightcliffe.

Calderdale Planning Reference Number: 19/00878/OUT.

Address: Spring Lodge Stone Services St Giles Road Lightcliffe Brighouse Calderdale HX3 8BN  
Proposal: Demolition of buildings to facilitate construction of 14 houses with access off St Giles Road (Outline)

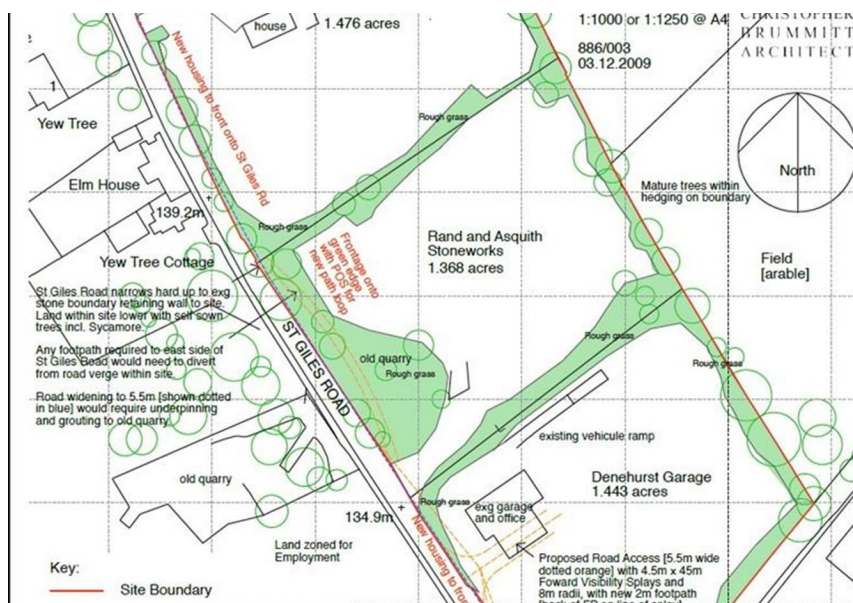
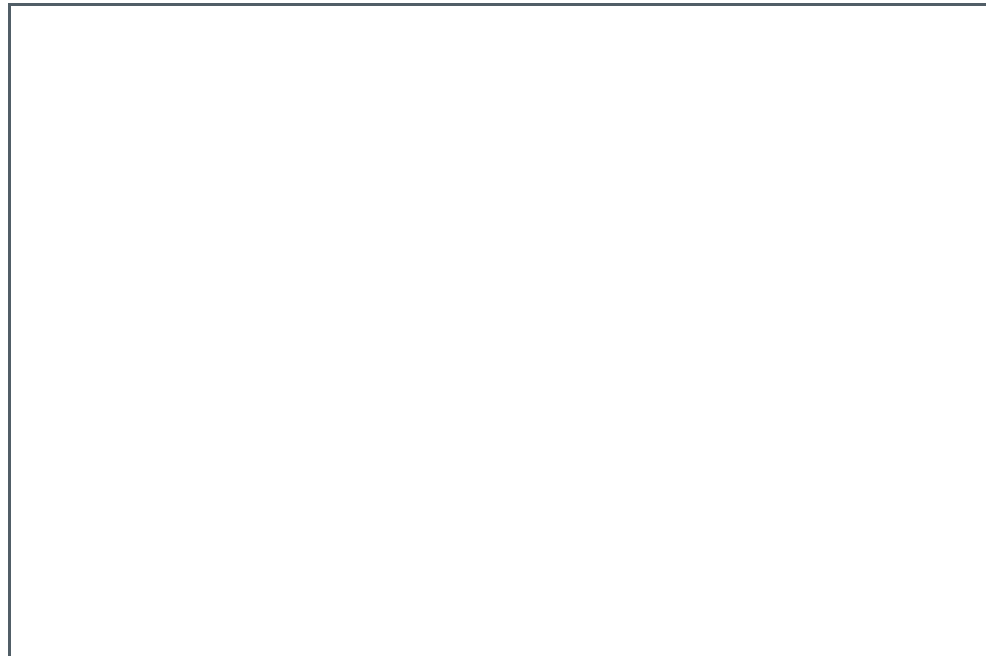
Ask us about....

AUCTION

CONVEYANCING

MORTGAGES

SURVEYS



These particulars do not form part of any contract and no statements are made without any responsibility on the part of their clients. Applicants must investigate for themselves that statements are correct and no agent whether the partner or employee has the authority to make any representation or warranty whatsoever in respect of this property.

**IMPORTANT NOTICE:** WHILST WE ENDEAVOUR TO MAKE OUR SALES DETAILS ACCURATE AND RELIABLE, THEY SHOULD NOT BE RELIED ON AS STATEMENTS OR REPRESENTATIONS OF FACT AND DO NOT IN ANY WAY CONSTITUTE A CONTRACT.

PROSPECTIVE PURCHASERS SHOULD SATISFY THEMSELVES THAT DIMENSIONS ARE CORRECT AND THAT MAINS SERVICES ARE OPERATIONAL.

Energy Efficiency Rating		Current	Potential
Very energy efficient - lower running costs			
(92 plus) <b>A</b>			
(81-91) <b>B</b>			
(69-80) <b>C</b>			
(55-68) <b>D</b>			
(39-54) <b>E</b>			
(21-38) <b>F</b>			
(1-20) <b>G</b>			
Not energy efficient - higher running costs			
England & Wales		EU Directive 2002/91/EC	

Environmental Impact (CO <sub>2</sub> ) Rating		Current	Potential
Very environmentally friendly - lower CO <sub>2</sub> emissions			
(92 plus) <b>A</b>			
(81-91) <b>B</b>			
(69-80) <b>C</b>			
(55-68) <b>D</b>			
(39-54) <b>E</b>			
(21-38) <b>F</b>			
(1-20) <b>G</b>			
Not environmentally friendly - higher CO <sub>2</sub> emissions			
England & Wales		EU Directive 2002/91/EC	